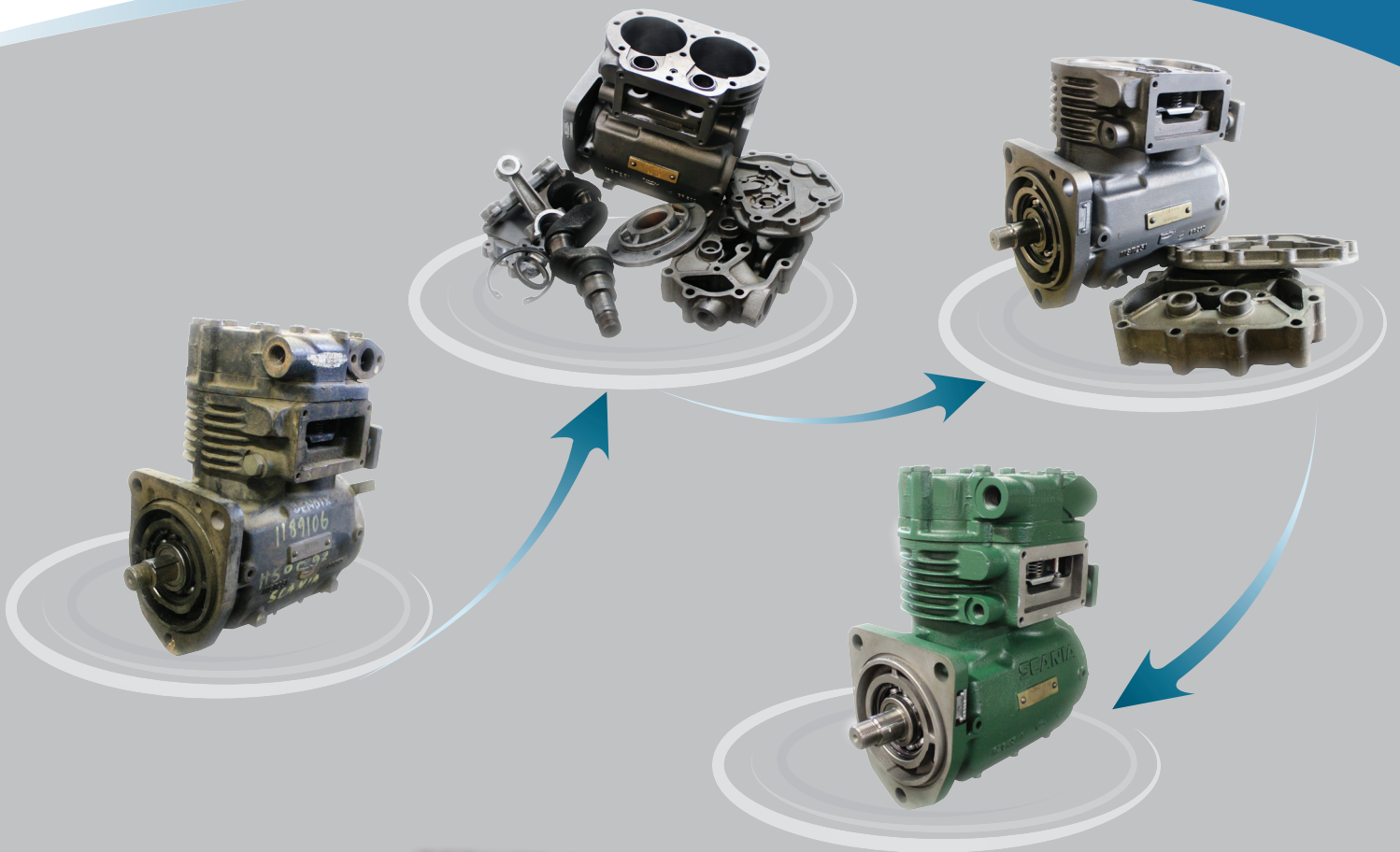


RECONDITIONED AIR COMPRESSORS



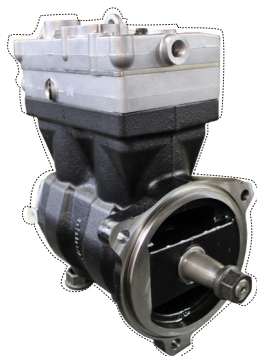
REDUCE CARBON EMISSIONS

REDUCE COSTS

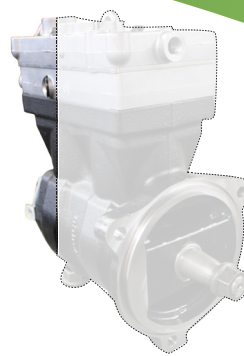
CREATE JOBS

Carbon Dioxide Emissions

+ - 1/10TH



VS



New: +- 6.4 kg CO2

Reconditioned: +- 0.6 kg CO2

Manufacturing a **NEW** twin cylinder air compressor creates approximately **6.4kg** of carbon dioxide emission. **RECONDITIONING** a twin cylinder air compressor creates approximately **0.6 kg** of carbon dioxide emission.

DETROIT

TF500, TF700



289925
289941
276961
276962

6V92, 8V71



TF750

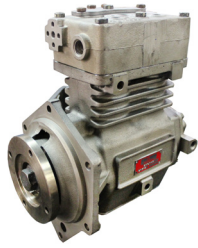
107623
107813

Series 60
DDEC 2

TF750

5004187

Series 60
DDEC 3



TF501

286538
286839

TF1000

276777

Rail



Midland

EL16050
EL13050

6V92
6V71

MACK

TF700

289340

6 Cyl, E6,
R600



TF700

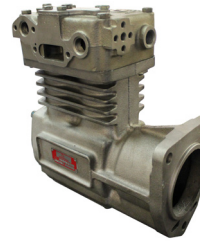
289348

V8, E9

TF750

107510
108869

E6



TF501

286544

E6, R600

Holset

3558000

E7



WABCO Twin 85mm

912 542 002 0
912 542 007 0

MP8

INTERNATIONAL

Midland 1300 & 1600

EL13020
EL03060

DT466
D358



TF400

229460

1610, 1810,
GM345, D358



Midland 740

KN7040

V8, D358



Midland 840

KN86020

1810C

PERKINS

Bendix Twin

KZ407

6354,
Acco 1730



Wabco Clayton 90mm

911 142 000 0
911 146 003 0

Phaser
160, 180, 210



Clayton

PCGA836

6354



Bendix 1W250R

1189499
1189500

Phaser
210

VOLVO

15.5

KZ433

F, FL, N, NL,
B10, TD100



Knorr Twin

LP4992 LP4985
LK4951 LK4954

B12, B12B, B7R,
FM, NH



TF500 TF700

280737
289257

F, G, N

IVECO

Knorr/Marelli

ACX82
ACX83



Wabco Twin

412 704 ***
912 512 ***

FH13, FH16



Knorr Single

LP3970

FL6



TF501

286563

F7



Wabco

911 506 054 0

3470

Note : Cross References are for Illustrative Purposes only – This is not an Applications Guide

CUMMINS

SS296, SS338



3018543
3018527
3558044

KT,L10,NTC

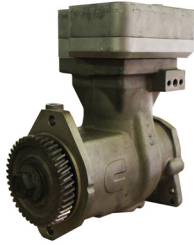
SS296C



3558006
3558022
3558021
3558097

B & C Series

Wabco 75mm



911 153 *** 0
911 154 *** 0

E7

Mildand 1300



EL13040

L10

TF750



107507

L10, M11, N14

TF501



104398

L10,
CT 8.3

QE338 QE296



3558050
3558051
3558052

C series,
ISM, M11,
N14+

CLAYTON DEWANDRE



SC6 Air Cooled

AC6000
PCGA821



SC6 water cooled

WC6000

BUS



WV7015
WV7044

0405NH
OM447

MAN

BUS, TRUCK



WV7030
WV7040

D2566

DAF

Wabco Twin 85mm



911 501 ***
911 505 ***

2800, 3300,
3600

SCANIA

15.5



KZ642
KZ1228
KZ396
KZ996

2 & 3 Series
DS11
DS14

CAT

TF750



103278

3406B
3406

WABCO



411 151 ***

Wabco Twin 75mm



911 504 ***
WV7120T

CF

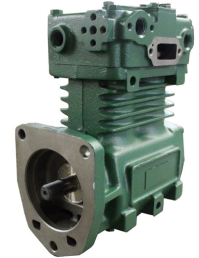
KNORR



LP4814
LP4815

3 Series

TF750



109142

3406E
C12
C15

Wabco & Knorr Single



411 145 ***
LK3812

Knorr 80mm



LK3875

LF

KNORR



LP4964

4 Series

TF501



286585
286592

3208

MERCEDES

Wabco Twins



911 553 ***
912 510 ***
912 512 ***

0500, 0500LE
0500RF

Wabco Singles



411 034 ***
411 141 ***

OH1418
OM360
OM366A

Wabco single 85mm



411 151 *** 0

Atego, 906LA,
Vario

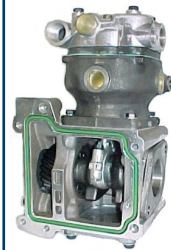
BUS



WV7020

OM400

V Series Truck



WV7010/T

OM422

Knorr 75mm



LK1900

1517, 1621

BUS



WV7015
WV7044

0405NH
OM447

All RECO Units Are:

- Machined or sleeved back to standard
- New bearings plus crankshaft machining
- 20 years experience
- 6 month warranty
- New valves parts
- New Pistons & Rings

REDUCE CARBON EMISSIONS REDUCE COSTS CREATE JOBS

